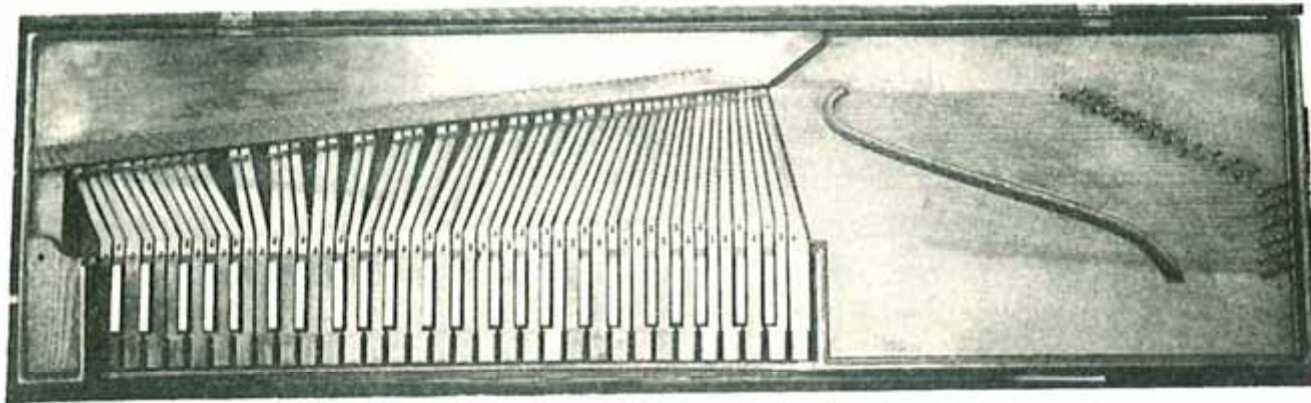


Η Ακουστική του Πιάνου

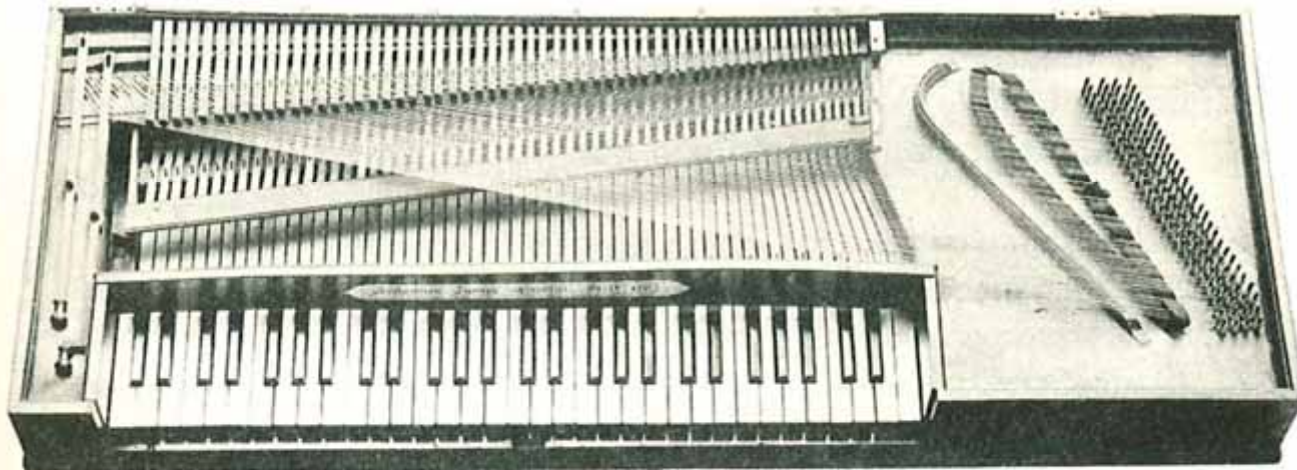
Αντώνης Μαλάμης

Κύκλος Διαλέξεων Μουσικής Ακουστικής ΙΕΜΑ

6 Απριλίου 2011



a



b

Plate V (*a*). Square 'Clavichord' Pianoforte at Stuttgart: Württembergisches Landesgewerbemuseum.

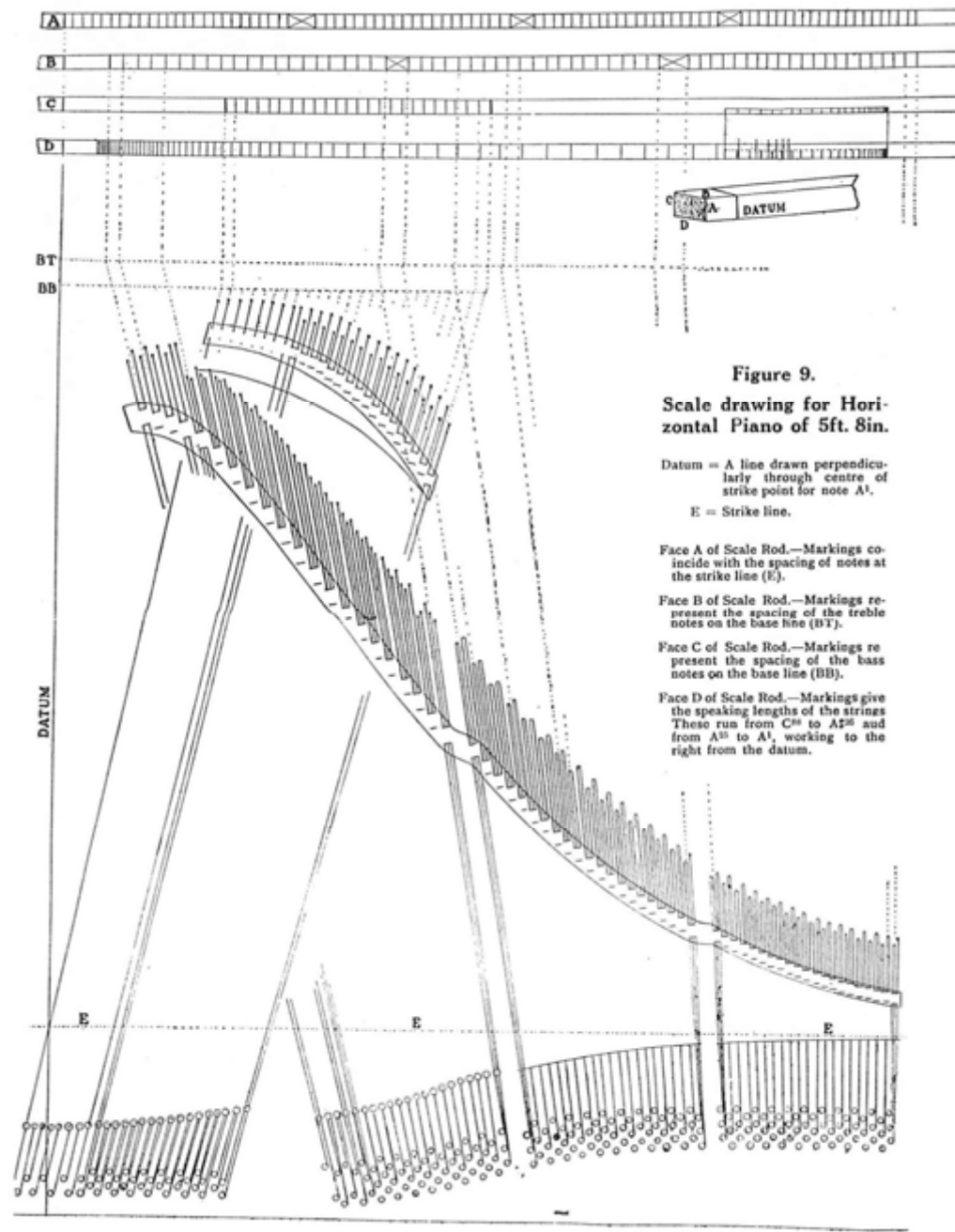


Figure 9.

Scale drawing for Horizontal Piano of 5ft. 8in.

Datum = A line drawn perpendicularly through centre of strike point for note A¹.

E = Strike line.

Face A of Scale Rod.—Markings coincide with the spacing of notes at the strike line (E).

Face B of Scale Rod.—Markings represent the spacing of the treble notes on the base line (BT).

Face C of Scale Rod.—Markings represent the spacing of the bass notes on the base line (BB).

Face D of Scale Rod.—Markings give the speaking lengths of the strings. These run from C⁸⁰ to A²⁶ and from A³⁰ to A¹, working to the right from the datum.

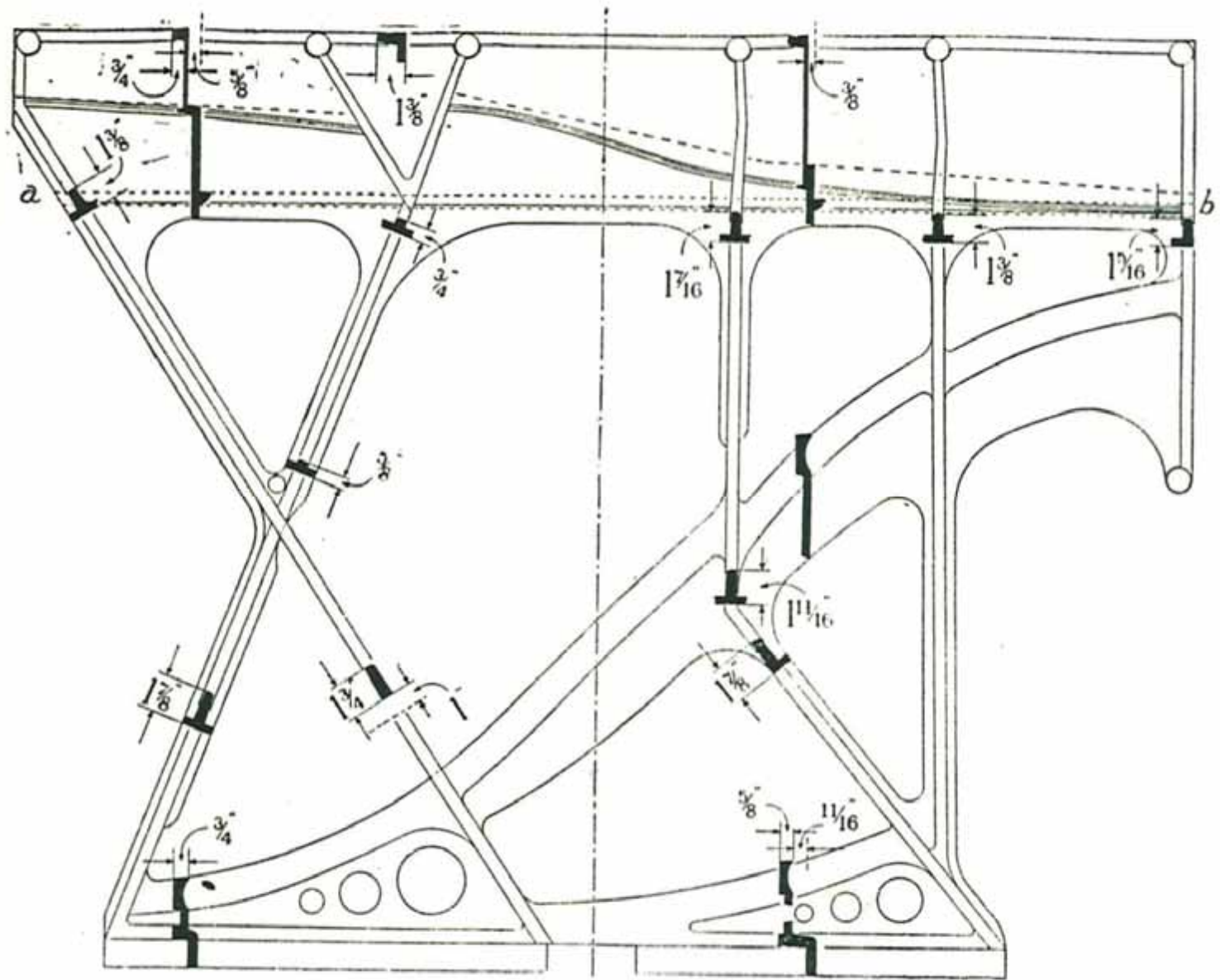
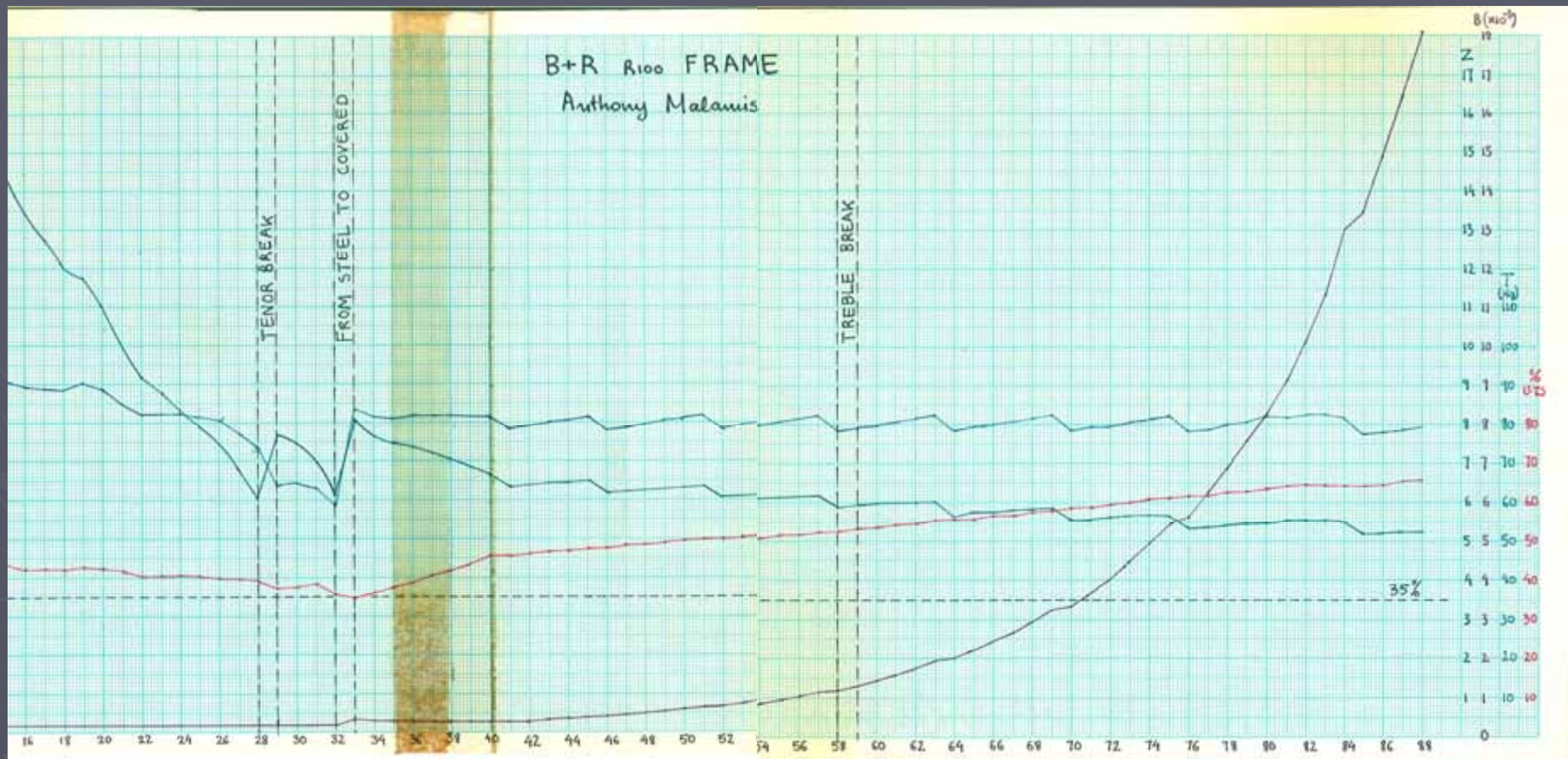
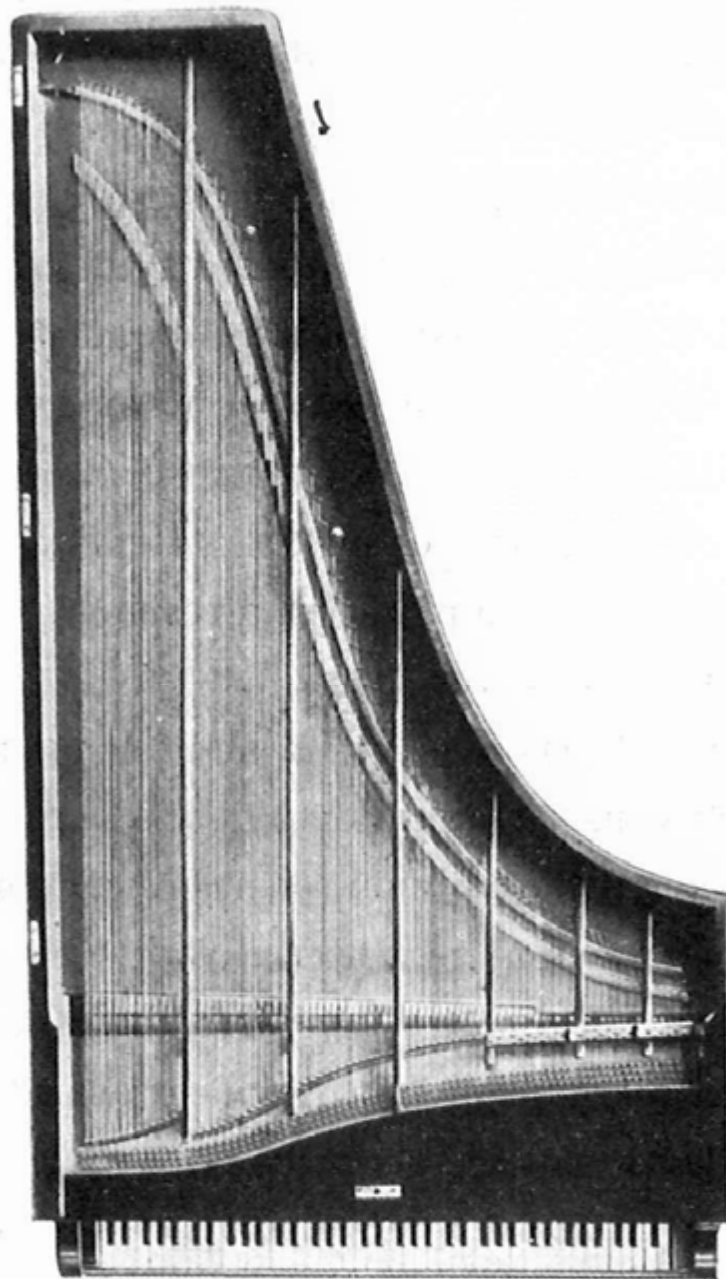


FIG. 12.

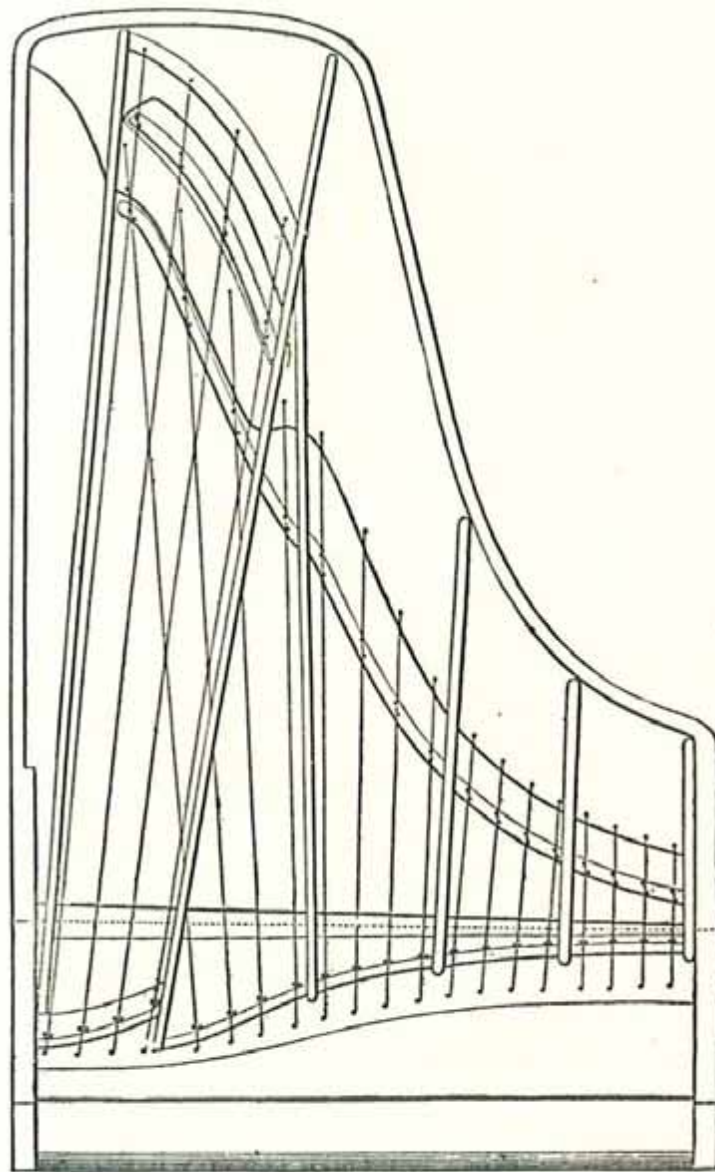


Η ακουστική του πιάνο

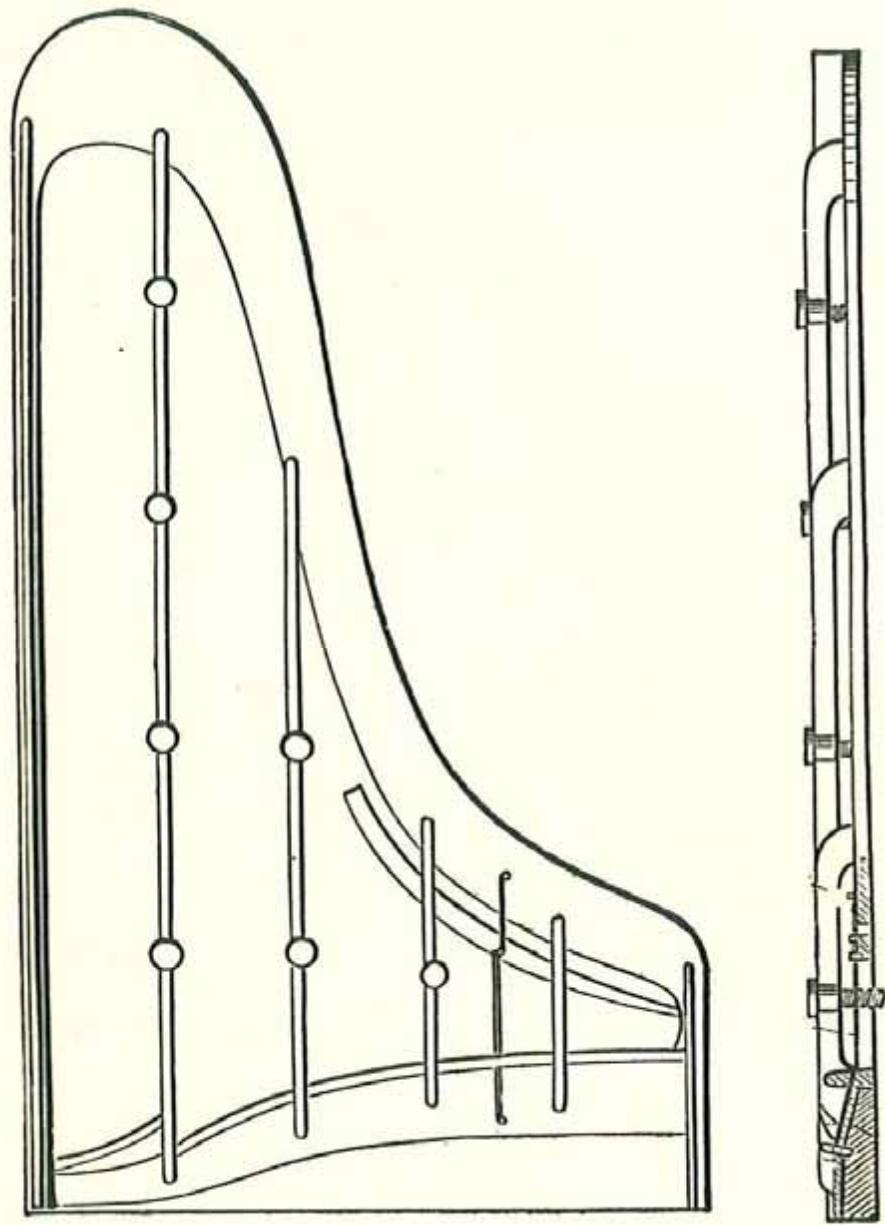


Erard's First Iron Bar Grand Piano, 1823

Η ακουστική του πιάνου



Steinway Grand Iron Frame, 1859



Chickering Grand Iron Frame, 1843

Η ακουστική του πιάνου

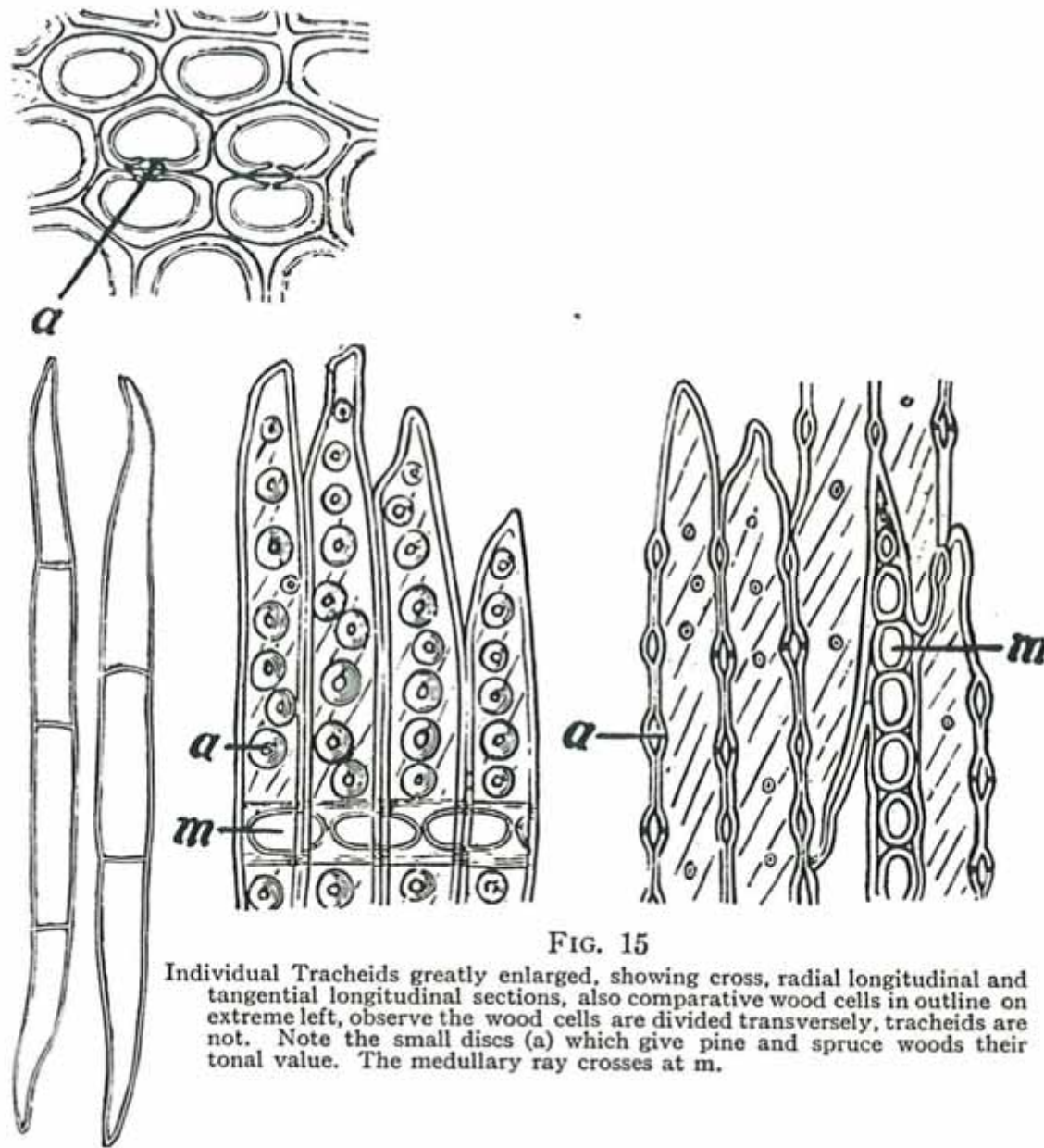
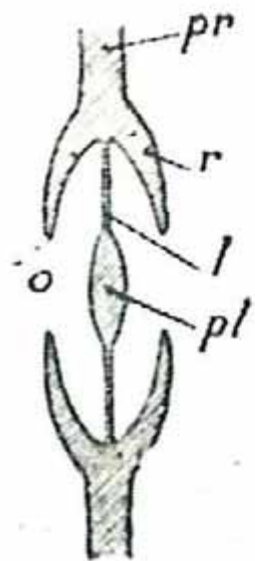
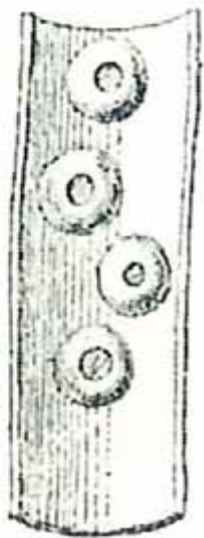


FIG. 15

Individual Tracheids greatly enlarged, showing cross, radial longitudinal and tangential longitudinal sections, also comparative wood cells in outline on extreme left, observe the wood cells are divided transversely, tracheids are not. Note the small discs (a) which give pine and spruce woods their tonal value. The medullary ray crosses at m.



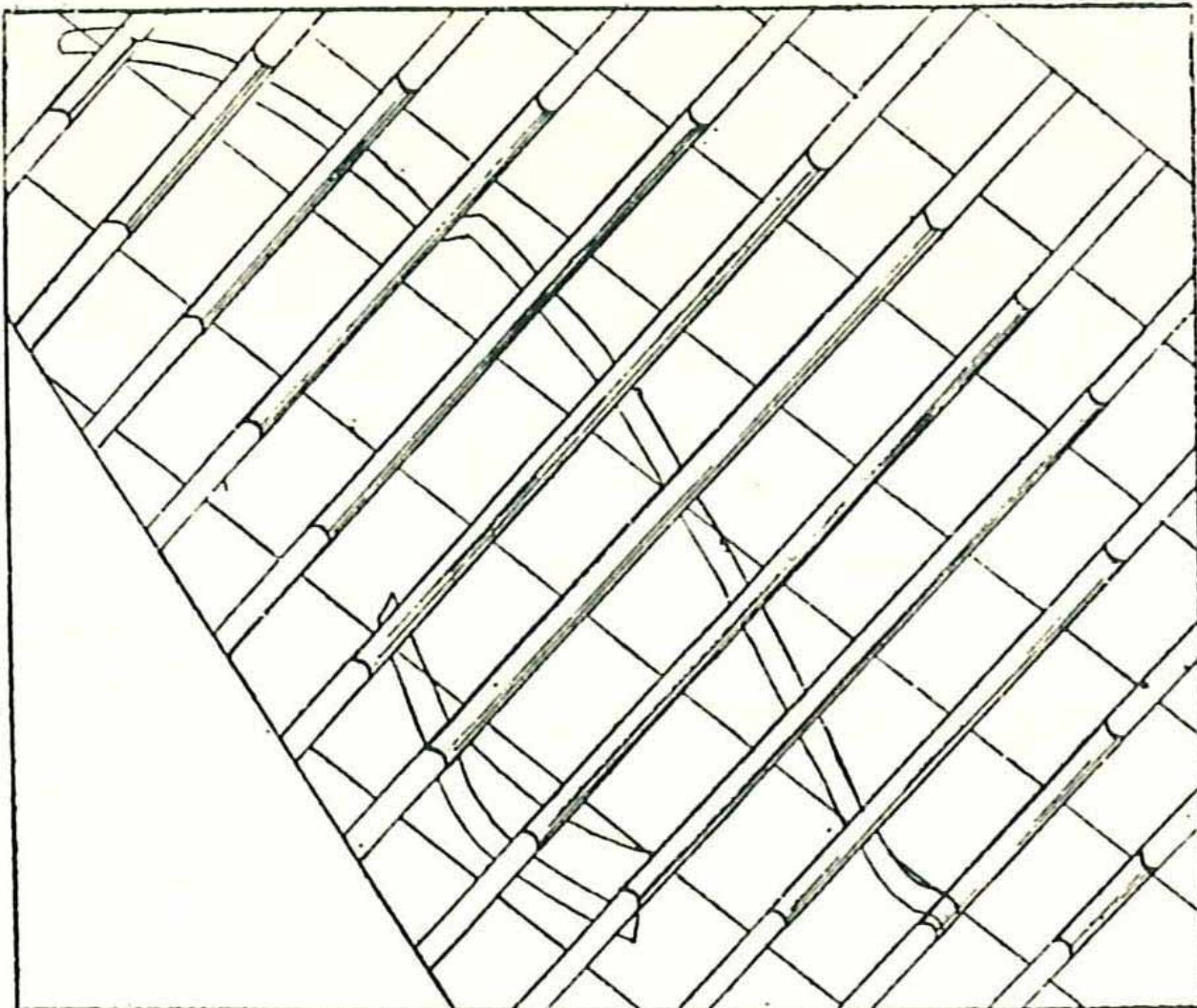
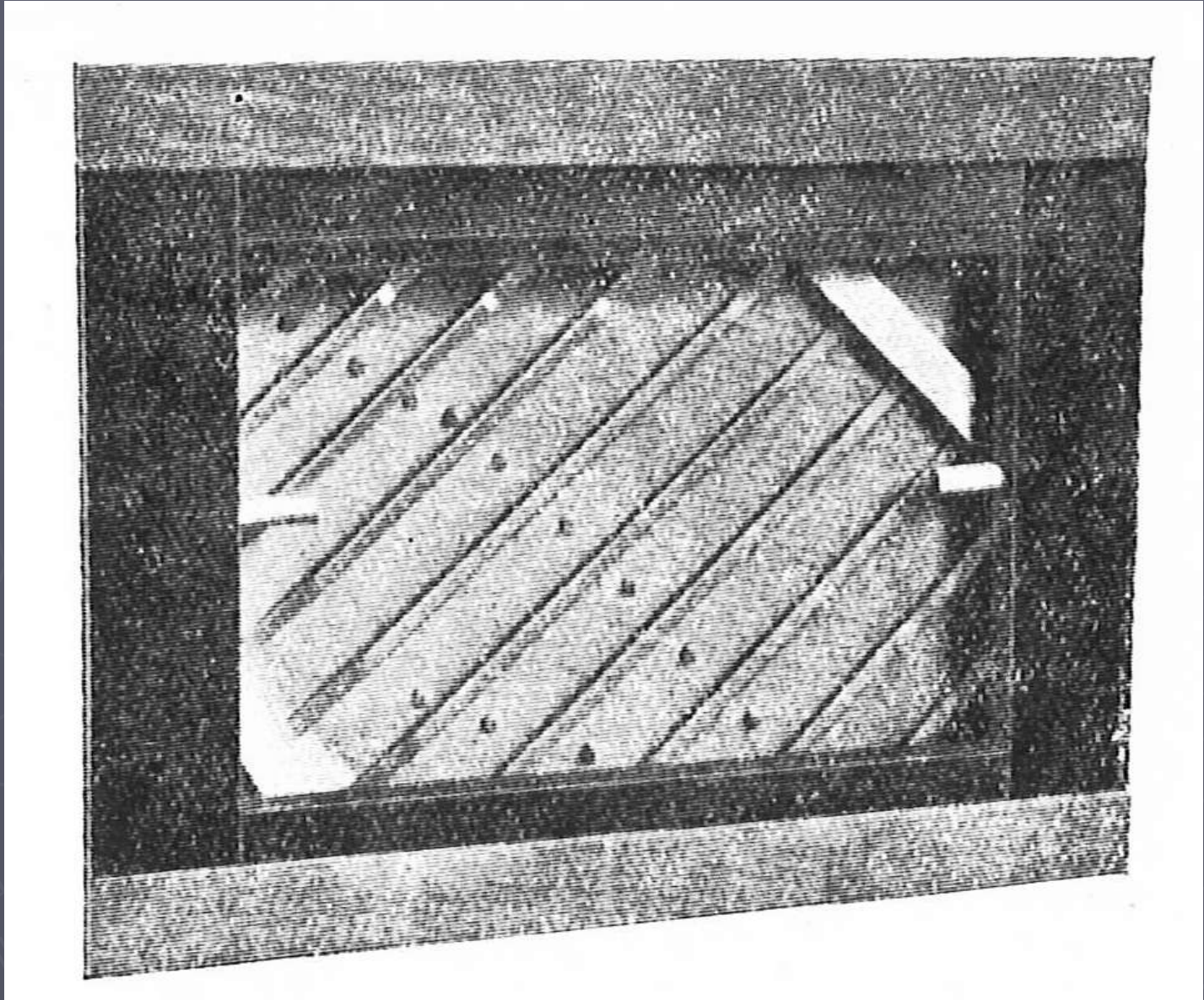
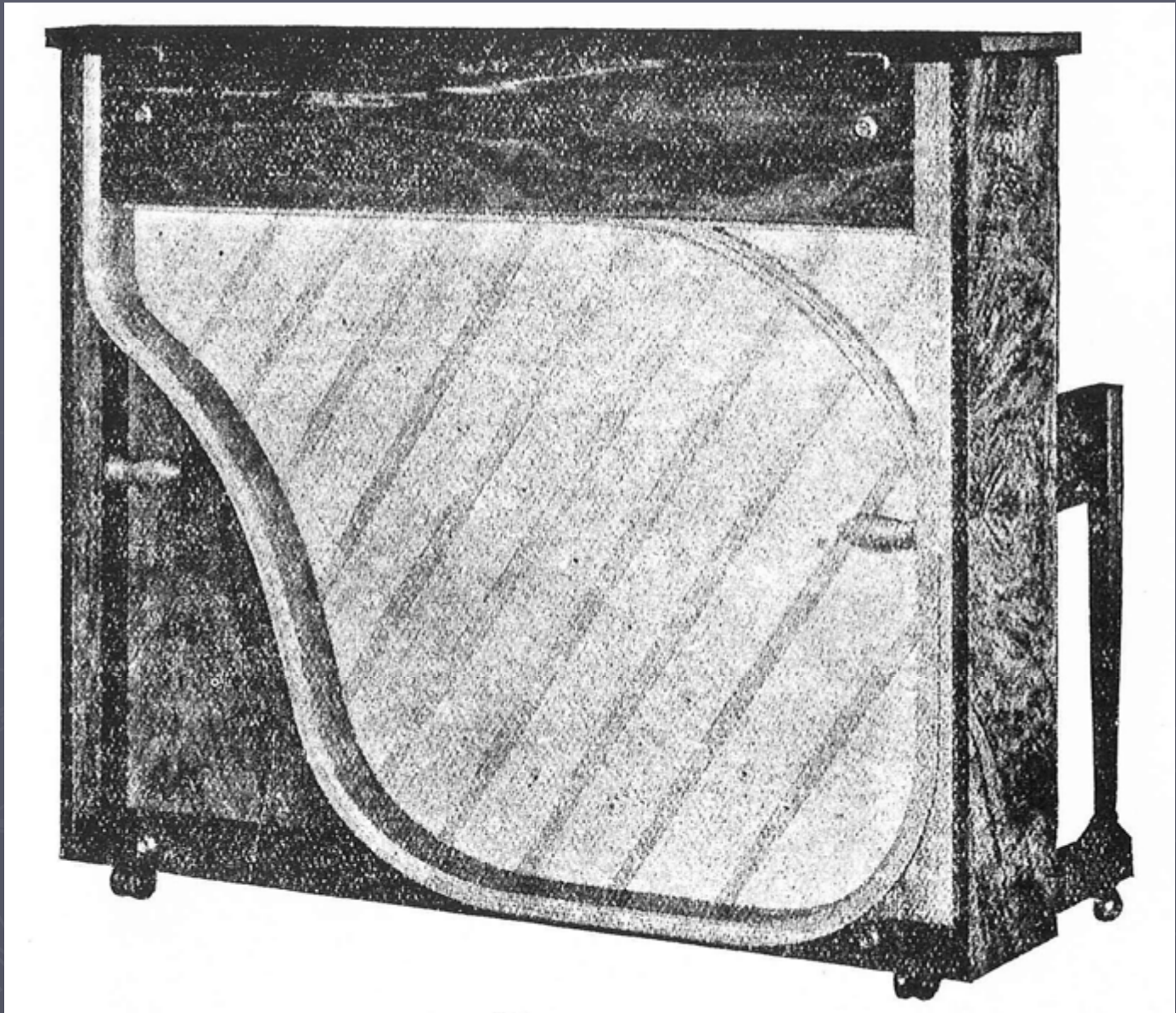


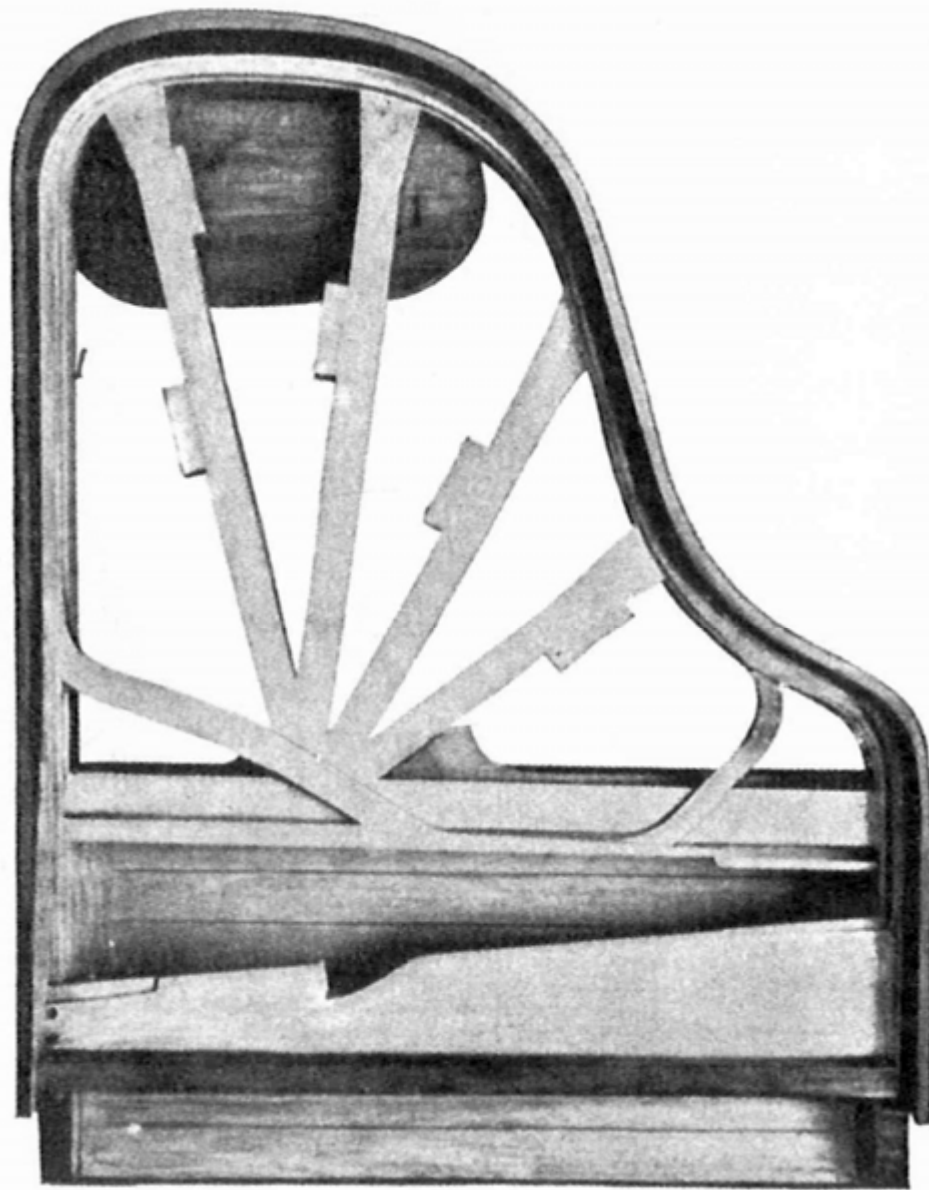
Figure 106



Η ακουστική του πιάνου



Η ακουστική του πιάνου



Baldwin Grand Case with Acoustic Rim

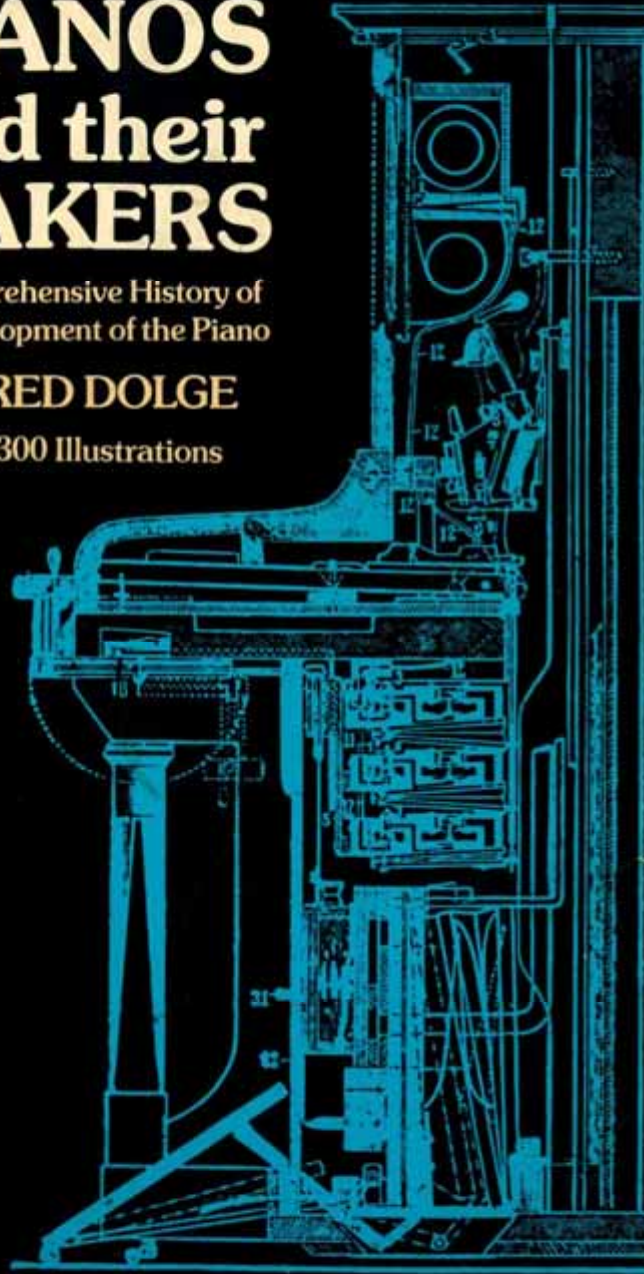
Η ακουστική του πιάνου

PIANOS and their MAKERS

A Comprehensive History of
the Development of the Piano

ALFRED DOLGE

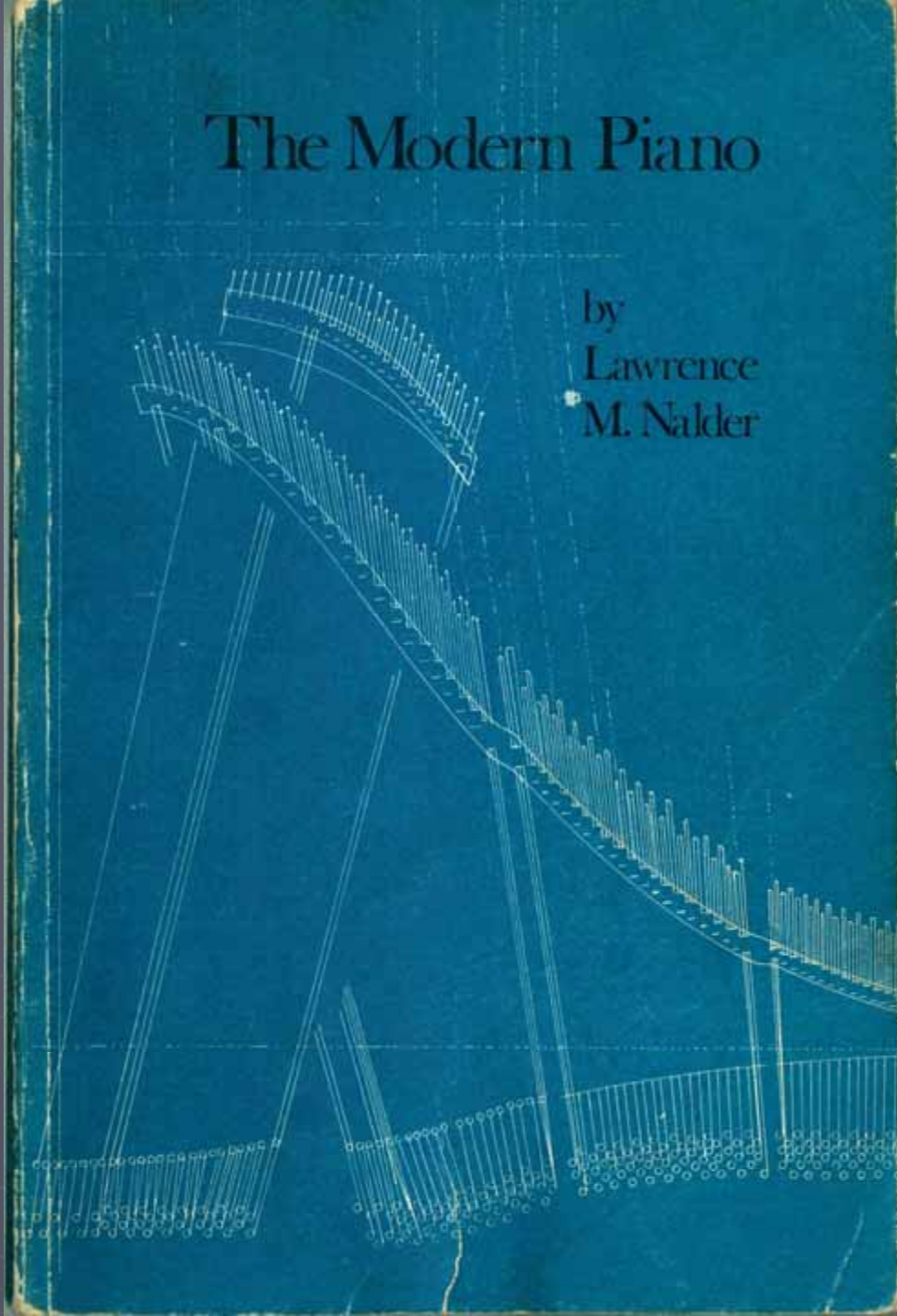
With 300 Illustrations



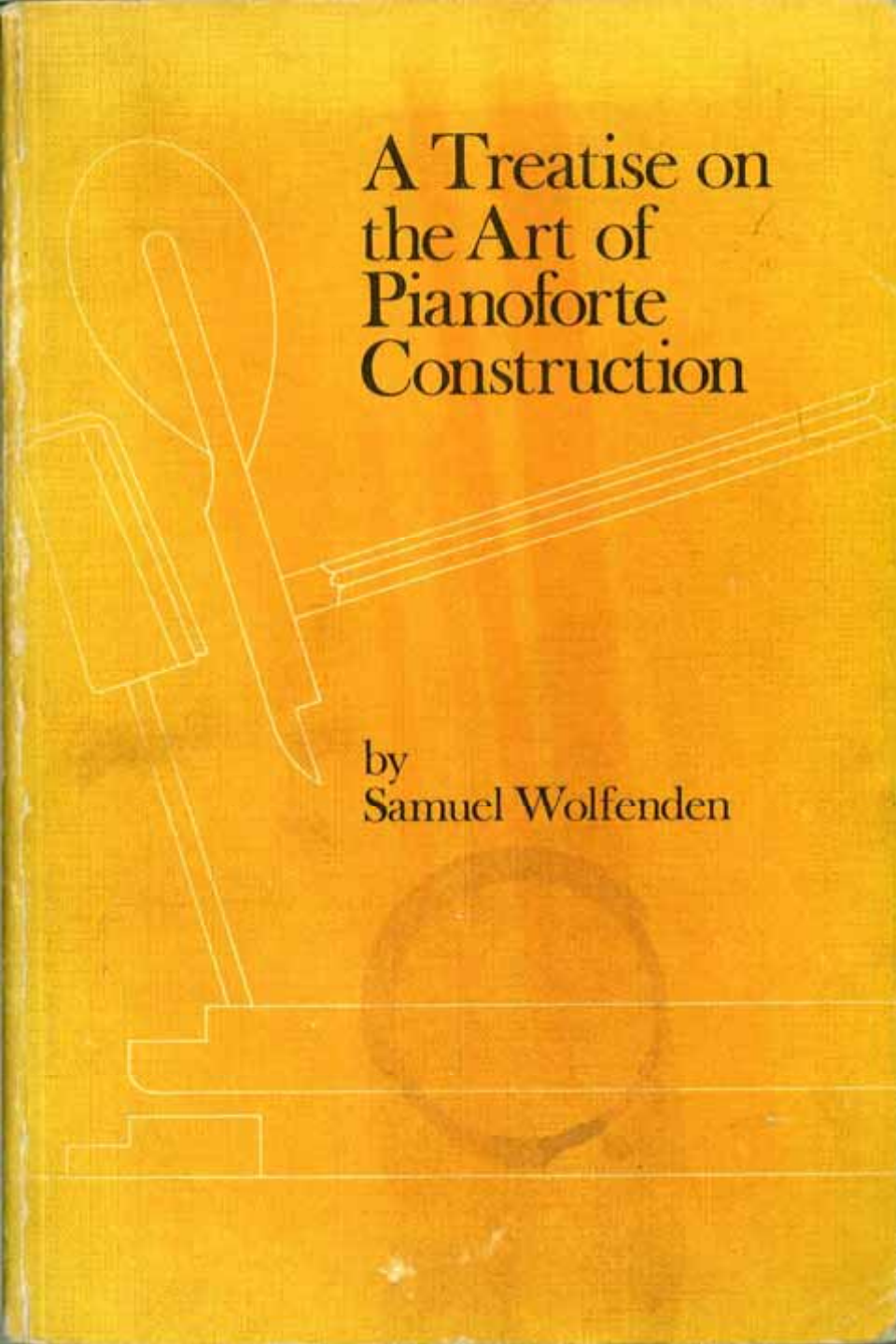
Η ακουστική του πιάνου

The Modern Piano

by
Lawrence
M. Nalder



Η ακουστική του πιάνου



A Treatise on
the Art of
Pianoforte
Construction

by
Samuel Wolfenden

The Piano-Forte


**ITS HISTORY TRACED TO THE
GREAT EXHIBITION OF 1851**



Rosamond E.M. Harding

SECRETS OF PIANO CONSTRUCTION




The Vestal Press Ltd

Η ακουστική του πιάνου